

G O R M A N - R U P P P U M P S

PUMPS FOR CONSTRUCTION

PRIMING-ASSISTED



GR[®]
GORMAN-RUPP
PUMPS

GRpumps.com

GORMAN-RUPP SETS A WHOLE NEW STANDARD IN PRIMING-ASSISTED PERFORMANCE



Superior products require state-of-the-art facilities, and Gorman-Rupp's manufacturing plants are among the most efficient and modern facilities in the world. We continually update our plants and employ the latest technology to ensure our products are the most reliable in the industry. We realize that modern, efficient facilities are necessary for providing superior fluid-handling solutions.

Electric-driven configurations are available on some models. Consult factory for more information.



With sizes from 2.5" to 16", heads up to 490 ft., flows up to 17,700 gpm and 4.25" solids-handling capability, Gorman-Rupp's extensive line of hard-working, dependable pumps will tackle everything, including clear liquids, tough solids, and slurry applications.*

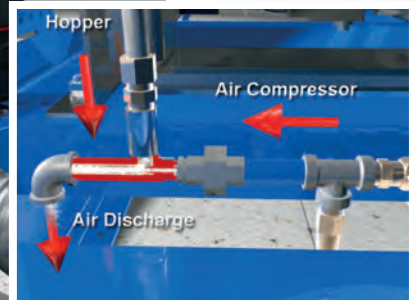
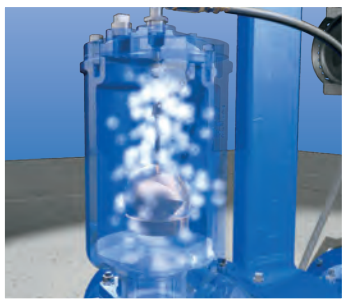
You can choose the Prime Aire® venturi priming system or the Redi-Prime® diaphragm priming system. Both offer automatic priming and repriming.

For sewage bypass operations, construction site dewatering and remediation or other applications where intermittent flow can be a problem, these dependable, versatile performers help contractors move large volumes of water rapidly, even when sticks, stones, and debris would normally present a problem.

All of Gorman-Rupp's priming-assisted (dry prime) pumps are designed and engineered for the most rugged and demanding construction applications and are backed by an industry leading two year warranty.



*For larger flows, contact the factory. Additional pump models are available up to 30" in size and up to 40,000 gpm.



PRIME AIRE® PUMPS FEATURE GORMAN-RUPP'S UNIQUE PRIMING SYSTEM



THIS SYSTEM USES a venturi and a compressor, which eliminates the leaks associated with traditional vacuum-assisted pumps. This unique system not only reduces environmental concerns on sewage bypass operations and other environmentally hazardous liquids, but it also enables the pumps to operate under flooded suction conditions without leaking. The positive priming of the Prime Aire® is well suited for applications involving long suction lines, intermittent flows or large volumes of air in the liquid being pumped.

DRY RUN CAPABILITY is designed into the Prime Aire® system. An oversized, oil-lubricated mechanical seal allows the pump to run dry continuously without damage. For positive, reliable priming time after time, Gorman-Rupp Prime Aire® pumps are the ones you can count on.



DUAL-SUCTION SIDE CAPABILITY, on model PA6C, features a removable coverplate and adjustable/ replaceable wearplate.

COMPRESSOR OVER PUMP Several popular models are available in a "Compressor-Over-Pump" arrangement. This innovative configuration option offers a self-contained, compact, flexible design while allowing ease of operation and servicing when needed.



SOLIDS-HANDLING IMPELLER Many Prime Aire® pumps feature rugged open-type, two-vane ductile iron impellers that are specifically designed to handle solids and debris up to 4" (102 mm) in diameter. This means fewer clogs and more productivity on tough jobs.



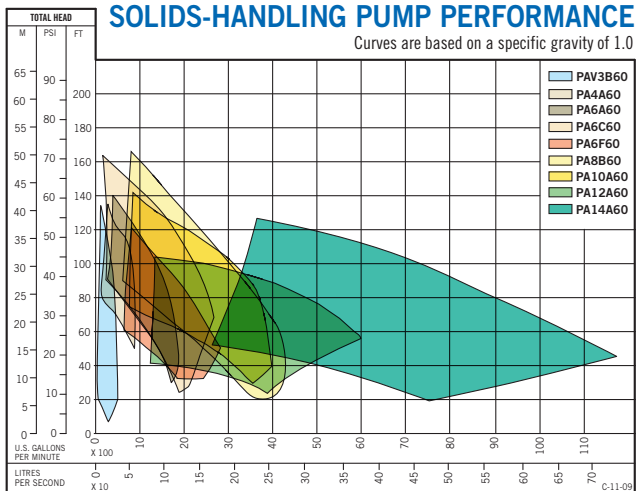
ABRASIVE-HANDLING SEAL Prime Aire® pumps are equipped with oversized, mechanical, oil-lubricated, seals that are designed to take the wear and tear of pumping solids, slurries and other abrasives.

STANDARD AUTO-START CONTROLS start and stop the pump in response to a liquid level. The pump starts only when there is water to pump and turns itself off when the water reaches the desired level. There is never any need to waste fuel and add to costly engine overhauls.



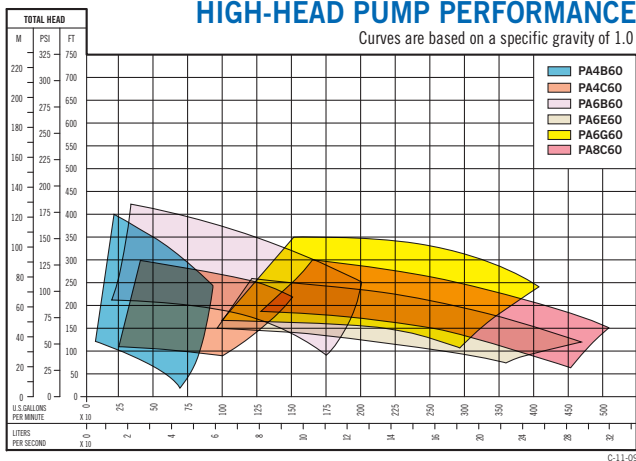
SOLIDS-HANDLING PUMP PERFORMANCE

Curves are based on a specific gravity of 1.0



HIGH-HEAD PUMP PERFORMANCE

Curves are based on a specific gravity of 1.0



Sound-attenuated options available on some models. Consult factory for additional details.

MODEL	OPERATING RANGE			
	SIZE (Maximum)	MAX FLOW	MAX HEAD	MAX SOLIDS
PAV3B60	3" x 3" (75 mm x 75 mm)	450 gpm (28.4 lps)	136' (41.5 m)	3" (76.2 mm)
PA4A60	4" x 4" (100 mm x 100 mm)	930 gpm (58.7 lps)	134' (40.8 m)	3" (76.2 mm)
PA4B60 HIGH-HEAD	6" x 4" (150 mm x 100 mm)	850 gpm (53.6 lps)	406' (123.7 m)	.41" (10.4 mm)
PA4C60* HIGH-HEAD	6" x 4" (150 mm x 100 mm)	1625 gpm (102.5 lps)	360' (109.7 m)	3" (76.2 mm)
PA6A60	6" x 6" (150 mm x 150 mm)	1810 gpm (114.2 lps)	140' (42.7 m)	3" (76.2 mm)
PA6F60*	6" x 6" (150 mm x 150 mm)	2700 gpm (114.2 lps)	152' (42.7 m)	3" (76.2 mm)
PA6C60	6" x 6" (150 mm x 150 mm)	2700 gpm (148.9 lps)	195' (44.5 m)	3" (76.2 mm)
PA6B60 HIGH-HEAD	6" x 6" (150 mm x 150 mm)	1900 gpm (119.9 lps)	420' (128.0 m)	.69" (17.5 mm)
PA6E60 HIGH-HEAD	10" x 6" (250 mm x 150 mm)	4700 gpm (296.6 lps)	290' (88.4 m)	3.38" (85.9 mm)
PA6G60 HIGH-HEAD	8" x 6" (200 mm x 150 mm)	4100 gpm (258.7 lps)	360' (109.7 m)	1.22" (31 mm)
PA8B60	10" x 8" (250 mm x 200 mm)	4450 gpm (281 lps)	168' (51.2 m)	3.38" (85.9 mm)
PA8C60 HIGH-HEAD	10" x 8" (250 mm x 200 mm)	5000 gpm (315.3 lps)	360' (109.7 m)	3.38" (85.9 mm)
PA10A60	10" x 10" (250 mm x 250 mm)	3900 gpm (234.0 lps)	160' (48.8 m)	3.25" (82.6 mm)
PA12A60	12" x 12" (300 mm x 300 mm)	6320 gpm (398.7 lps)	104' (31.7 m)	3" (76.2 mm)
PA14A60	14" x 14" (350 mm x 350 mm)	11950 gpm (753.9 lps)	149' (45.4 m)	4" (101.6 mm)

* Models also available in 316 stainless steel.



THIS PRIMING SYSTEM is specifically designed with the environment in mind. By incorporating a positive sealing float box and an integrally mounted diaphragm pump into the priming assembly, environmental contamination associated with the priming system is virtually eliminated.

Models are engineered with highly efficient, enclosed impellers, with some models using double volutes increasing the performance far beyond many competitors' pumps. The Cycloseal® design, with its impeller backvanes and unique deflector vanes, assists in removing solids and abrasive materials from the seal area – in some cases more than tripling the normally expected mechanical seal life.

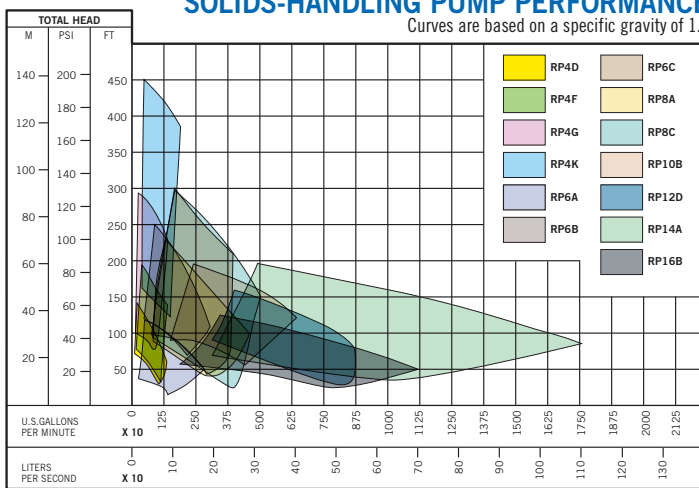


DRY RUN CAPABILITY

Lubricant prevents dry running of the seal faces while priming, repriming, and standby. The dry run gland is connected to a lubricant reservoir so that shaft rotation provides circulation and cooling of the lubricant.

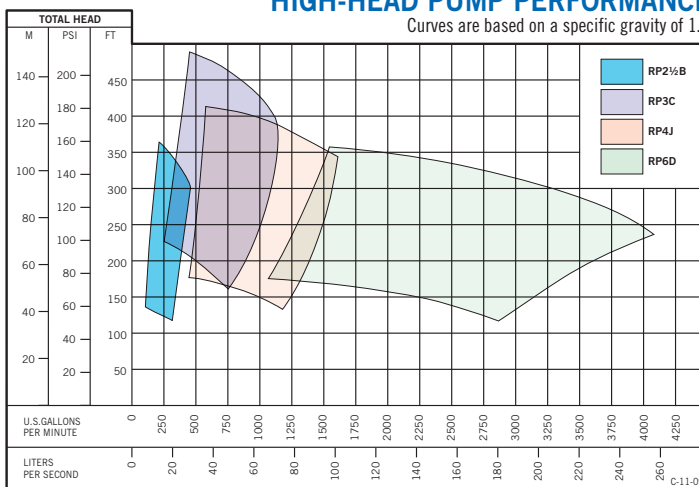
SOLIDS-HANDLING PUMP PERFORMANCE

Curves are based on a specific gravity of 1.0



HIGH-HEAD PUMP PERFORMANCE

Curves are based on a specific gravity of 1.0



For larger flows contact the factory. Additional pump models are available up to 30" in size and up to 40,000 gpm.

MODEL	OPERATING RANGE			
	SIZE (Maximum)	MAX FLOW	MAX HEAD	MAX SOLIDS
RP2½B60 HIGH-HEAD	4" × 2½" (100 mm × 63 mm)	500 gpm (31.5 lps)	360' (109.7 m)	.41" (10.4 mm)
RP3C60 HIGH-HEAD	6" × 3" (150 mm × 75 mm)	1390 gpm (87.6 lps)	490' (149.4 m)	.50" (12.7 mm)
RP4D60* HIGH-HEAD	6" × 4" (150 mm × 100 mm)	1700 gpm (107.2 lps)	375' (114.3 m)	3" (76.2 mm)
RP6A60** HIGH-HEAD	8" × 6" (250 mm × 150 mm)	4800 gpm (302.8 lps)	350' (106.6 m)	3.38" (85.8 mm)
RP8A60***	10" × 8" (250 mm × 200 mm)	4900 gpm (309.1 lps)	365' (111.2 m)	3.38" (85.8 mm)
RP10B60	12" × 10" (305 mm × 250 mm)	6100 gpm (384.8 lps)	250' (76.2 m)	4.25" (107.9 mm)
RP12D60	14" × 12" (305 mm × 305 mm)	10,000 gpm (630.9 lps)	195' (59.4 m)	3" (76.2 mm)
RP14A60	14" × 14" (356 mm × 356 mm)	11,100 gpm (700.2 lps)	145' (44.1 m)	4" (101.6 mm)
RP16B60	18" × 16" (406 mm × 406 mm)	17,700 gpm (1116.6 lps)	230' (70.1 m)	4.25" (107.9 mm)

* RP4F60, RP4G60, RP4J60, RP4K60 also available. **RP6B60, RP6C60, RP6D60 also available. ***RP8C60 also available.

Several models available in pedestal or SAE pump end configurations.



SELF-PRIMING CENTRIFUGAL PUMPS

Gorman-Rupp portable, engine-driven, self-priming centrifugal pumps are ideal for standby and emergency clean-up applications.

Pumps can handle up to 3" diameter solids, depending on model. Pumps to suit other applications are also available.

Optional wheel kit provides portability for easy access to the job site.

Pumps available in 1.5" to 10" sizes. Capacities to 3500 gpm, heads to 170'.



POWER TAKE-OFF

Power Take-Off self-priming centrifugal pumps are ideal for dust control on construction sites and mines and on water trucks. No check valves means better suction when handling fluids.

Pumps available in 2" to 3" sizes. Capacities to 350 gpm, heads to 350'.



SUBMERSIBLE PUMPS

An extensive line of high-volume, high-head submersibles for every application.

Slimline models for drilled wells, narrow cofferdams and other hard-to-reach places. Wide base models for open pits and quarries.

Mine Safety And Health Administration (MSHA) approved pumps are specifically designed for safe dependable operation in coal and gassy mines.

Trash-handling models for tough solids and abrasive liquids and slurries.

Pumps available in 1.5" to 20" sizes. Capacities to 12000 gpm, heads to 600'.



UTILITY PUMPS

Our Off-The-Shelf (OTS) program offers the most complete line of small utility pumps for the end user. Whether it's a light-in-weight self-priming portable pump or maybe a diaphragm or lightweight submersible, you can count on Gorman-Rupp to have the products when you need them.

Most of these products are in stock, ready to ship, when you need one of our OTS pump products.



Product information is subject to change; consult factory for details.



The Gorman-Rupp Company
Mansfield Division
 P.O. Box 1217
 Mansfield, Ohio 44901-1217, USA
 Tel: 419-755-1011
 Fax: 419-755-1251
 E-mail: grsales@gormanrupp.com

Gorman-Rupp International
 P.O. Box 1217
 Mansfield, Ohio 44901-1217, USA
 Tel: 419-755-1011
 Fax: 419-755-1266
 E-mail: intsales@gormanrupp.com

GRpumps.com

Gorman-Rupp of Canada Limited
 70 Burwell Road
 St. Thomas, Ontario
 Canada
 N5P 3R7
 Tel: 519-631-2870
 Fax: 519-631-4624
 E-mail: grcanada@grcanada.com

