

Full-Size VANGUARD Modular Integral Filter/Regulators

CFDR100 Models Port Sizes: 1/4, 3/8, 1/2, 3/4



Model Shown: CFDR100-6

- ◆ Filter and regulator consolidated in a single assembly.
- ◆ Modular assembly and mounting.
- ◆ 5- μ m-rated polyethylene filter element; optional sintered bronze elements.
- ◆ High-strength polycarbonate plastic filter bowl with steel shatterguard; optional metal bowl with clear nylon sight glass.
- ◆ Internal automatic drain; optional manual drain, internal float drain, or external Hydro-Jector drain.
- ◆ Self-relieving diaphragm-type regulator; non-relieving optional.
- ◆ Pressure adjustment locking key.
- ◆ Pressure gauge.
- ◆ NPTF port threads; optional BSPP threads.

SPECIFICATIONS

Ambient/Media Temperature:

Plastic Bowl: 40° to 125°F (4° to 52°C).

Metal Bowl: 40° to 175°F (4° to 79°C).

Body: Zinc.

Bowl: 8-Ounce (240-ml) capacity polycarbonate plastic with steel shatterguard; optional zinc bowl with clear nylon sight glass.

Dome: Nylon. Aluminum with option H spring.

Bowl Drain: Internal automatic drain; optional manual drain, internal float drain, or external Hydro-Jector drain.

Filter Element: 5- μ m-rated polyethylene; optional 5- μ m, 20- μ m, or 40- μ m sintered bronze.

Fluid Media: Compressed air.

Inlet Pressure:

Minimum: 15 psig (1 bar) with automatic drain, 30 psig (2 bar) with internal float drain.

Plastic bowl: 150 psig (10 bar) maximum.

Metal bowl: 200 psig (14 bar) maximum.

Knob: Acetal.

Outlet Pressure: Adjustable up to 125 psig (8.6 bar).

Pressure Adjustment Locking Key: Removable.

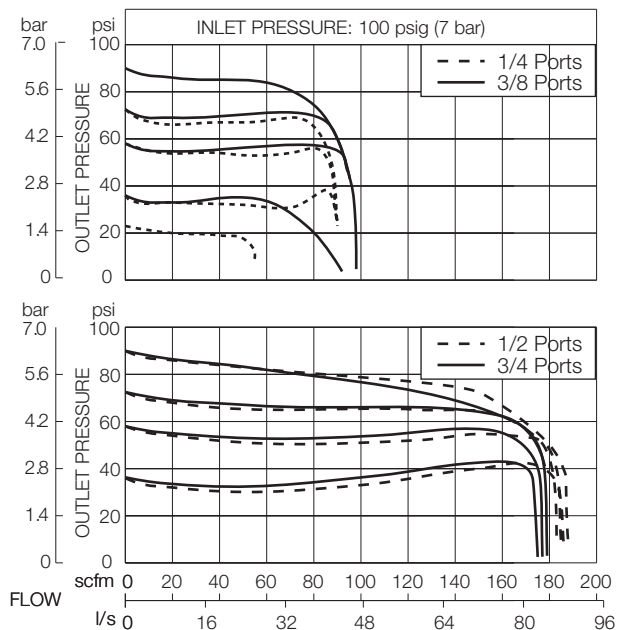
Pressure Gauge: 0 to 200 psig (14 bar); 1/4 NPT gauge ports front and rear.

Panel Mounting: 2-1/16 inch (52 mm) hole required.

Seals: Nitrile

FLOW CHARTS

Standard 5- μ m Element



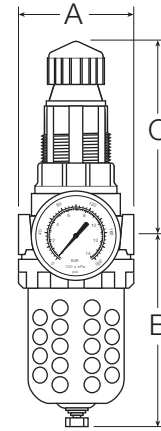
DIMENSIONS inches (mm)

Bowl	A	B *	C **	Depth †	Weight †
					lb (kg)
Plastic	3.5 (89)	5.8 (146)	5.8 (146)	3.5 (89)	2.50 (1.15)
Metal	3.5 (89)	6.4 (163)	5.8 (146)	3.5 (89)	2.55 (1.17)

* Bowl removal clearance: add 3.1 (79).

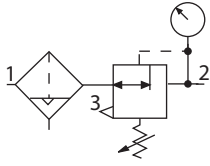
** Dome removal clearance: add 0.63 (16).

† Less gauge.



ISO Filter/Regulator Symbol

**Automatic Drain
Self-relieving**



REPLACEMENT FILTER ELEMENT KITS

Element Type	Kit Number
5-µm polyethylene (Std element).....	KA103-03PE5
5-µm bronze	KA103-03E5
20-µm bronze.....	KA103-03E4
40-µm bronze.....	KA103-03E3

ORDERING INFORMATION

Change the letters in the sample model number below to specify the filter/regulator you want.

B C FD R100-2 Y P W

BOWL TYPE

Plastic bowl..... Leave Blank
Metal bowl..... B

FILTER DRAIN

Internal automatic drain FD
Manual drain..... F
Internal float drain F5A
(Plastic stem). use 'leave blank'
option under '**BOWL TYPE**'.
Internal float drain F6A
(Brass stem). use 'B' option
under '**BOWL TYPE**'.
External Hydro-Jector drain FE

PORT SIZE

1/4 NPTF..... 2
3/8 NPTF..... 3
1/2 NPTF..... 4
3/4 NPTF..... 6

PORT TYPE

NPTF threads Leave Blank
BSPP threads W

OPTIONS (More than one option can be chosen. Add in alphabetical order)

0-200 psig Gauge Leave Blank
No psig Gauge NG
Mounting nut P

OPTIONS (More than one option can be chosen. Add in alphabetical order)

None Leave Blank
Non-relieving A
Sintered bronze filter element:
5-µm rating E5
20-µm rating E4
40-µm rating E3

Adjusting springs:

0-20 psig (0-1.4 bar) L20
0-175 psig (0-12 bar) H**
0-50 psig (0-3.4 bar) L

Less Drain Cock LDC
(1/4-NPT female port instead.

Use Manual drain option under
BOWL DRAIN section)

Metal Dome MD
Limit maximum psig setting M*
Tee handle T

MOUNTING BRACKETS

See page 320.

* Insert maximum limited pressure.

** H option spring includes metal dome.