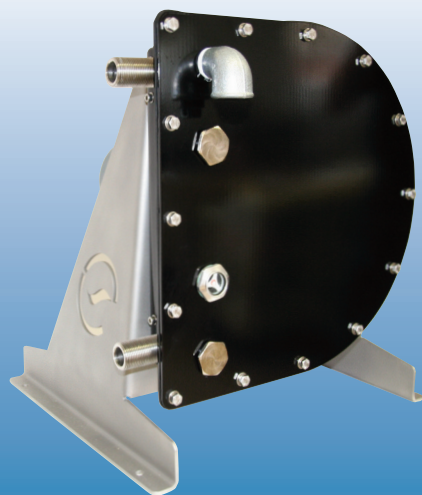


Thermo Scientific Enviroflex® L Series

Peristaltic Hose Pumps

Thermo Fisher Scientific has partnered with Environmental Pumping Solutions to supply the Enviroflex® L Series peristaltic hose pumps.

The L Series pumps improve process fluid handling by reducing downtime and energy consumption. Achieve up to twice the hose life and 50% less power consumption.*



Enviroflex L Series pumps provide all the benefits of other peristaltic pumps, with a number of key benefits — slower operating speed for a given flow rate; and rotating rollers for soft hose compression. This provides a longer hose life and reduced power consumption.

Ease of use

- Hinged front cover eliminates the need to lift equipment to remove the cover
- Seamless integration with your process equipment
- Self-priming suction lift up to a maximum of 30 feet vertical – allows flexible installation

Broad performance range

- Pump size from 10mm to 150mm
- Accurate & controllable flow rate from less than 1 GPM to 647 GPM
- Ideal for corrosive environments with pump casing options in 304 and 316 stainless steel (Standard is carbon steel)
- Discharge pressure capability to 145 PSIG (10 BAR)

Improved performance and efficiency

- Large rotor provides an increased flow per revolution reducing pump speed and prolongs hose life
- Roller design requires less power to deliver equivalent flow and pressure as comparable pumps
- Constant roller rotation ensures proper hose lubrication and increases hose life

Easy to maintain

- Hinged front cover provides easy access to pump interior, hose and connectors
- Internal hose connector eliminates need to dismantle external piping during hose replacement



Applications from
Fish Processing to
Lime Slurry
Transfer

* Dependent on models

Product Specifications



Common applications

- Activated Carbon Slurry Metering
- Effluent Processing
- Lime Slurry Transfer
- Mud Slurry Transfer
- Municipal Waste Transfer
- Sludge Transfer

Standard hose materials

- CSPE (Chlorosulfonated polyethylene)
- EPDM
- Natural Rubber
- FDA Approved Nitrile
- Industrial Grade Nitrile

Options available

- Leak detection
- Electronically variable speed drive
- Manually variable speed drive
- Global voltages from 200v to 525v
- Connections – NPT, ANSI Flange and Victaulic couplings

Specifications

Pump Model	Weight Lbs (kgs)	Dimensions L x W x H Inches (cm)	Max Continuous Speed (RPM)	Max Pressure PSI (BAR)	Max Continuous Flow Rate GPM (LPH)	Max Intermittent Flow Rate GPM (LPH)	Standard Connections
L10	66 (30)	14 x 10 x 20 (35 x 26 x 49)	70	109 (7.5)	0.92 (210)	1.32 (300)	1/4" NPT Male
L15	66 (30)	14 x 10 x 20 (35 x 26 x 49)	70	109 (7.5)	1.85 (420)	2.64 (600)	1/2" NPT Male
L20	143 (65)	20 x 20 x 21 (51 x 50 x 54)	90	145 (10)	5.5 (1242)	6.1 (1380)	3/4" NPT Male
L25	143 (65)	20 x 20 x 21 (51 x 50 x 54)	90	145 (10)	9.8 (2214)	10.8 (2460)	1" NPT Male
L32	342 (155)	27 x 24 x 29 (69 x 62 x 72)	70	145 (10)	17.6 (3990)	20.1 (4560)	1-1/2" NPT Male
L40	551 (250)	34 x 28 x 34 (86 x 70 x 86)	60	145 (10)	28.9 (6552)	43.3 (9828)	1-1/2" NPT Male
L50	661 (300)	34 x 29 x 39 (86 x 74 x 99)	50	145 (10)	45.7 (10,380)	73 (16,600)	2" NPT Male
L65	827 (375)	42 x 35 x 45 (107 x 89 x 114)	45	145 (10)	84 (19,170)	113 (25,560)	2-1/2" NPT Male
L80	1,190 (540)	49 x 37 X 52 (124 x 94 x 132)	35	145 (10)	114 (25,893)	163 (36,990)	3" NPT Male
L100	1,984 (902)	58 x 57 x 65 (148 x 146 x 165)	30	145 (10)	206 (46,800)	275 (62,400)	4" NPT Male
L150	3,968 (1,804)	85 x 60 x 75 (216 x 152 x 191)	25	145 (10)	462 (105,000)	647 (147,000)	6" NPT Male

Notes

- Weights vary with gear motor drive selected
- Other connections available on request
- Actual flows achieved may vary due to changes in temperature, viscosity, inlet and discharge pressures and/or system design
- Maximum process fluid temperature range is -4° F to +175° F (-20° C to +80° C)

©Registered trademark of Environmental Pumping Solutions, UK. Thermo Fisher Scientific is an exclusive distributor for Environmental Pumping Solutions pumping systems. ©2012 Thermo Fisher Scientific Inc. All rights reserved. All trademarks are the property of Thermo Fisher Scientific Inc. and its subsidiaries. Specifications, terms and pricing are subject to change. Not all products are available in all countries. Please consult your local sales representative for details.

Fluid Handling

28W092
Commercial Avenue

Barrington, IL
60010

1-800-637-3739
1-847-381-7050
1-847-381-7053 fax

www.thermo.com/fluidhandling
fluidhandling@thermofisher.com

L Series 4/10/12

Thermo
SCIENTIFIC

