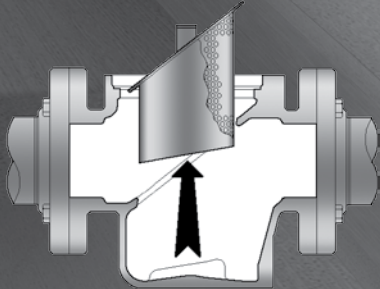




SIMPLEX BASKET STRAINERS VIKING LID-EASE®

PROTECTION FOR PUMPS AND DOWNSTREAM SYSTEMS



When the basket requires cleaning, simply vent system pressure, remove the lid and withdraw the basket from the top. Foreign matter contained in the basket will not drop back into the system.



The inclined position of the strainer basket adjacent to the porting allows for smooth flow patterns.



Features & Benefits

- Quarter-turn, easy opening breech-lock lid simplifies routine cleaning.
- Inclined basket design provides low pressure drop for high system efficiency.
- Top basket removal eliminates the need to drain the strainer and minimizes product loss.
- Optional magnetic inserts are available for trapping ferrous particles.
- Optional differential pressure indicators optimize cleaning intervals.
- Strainer pressure drop calculator available on www.vikingpump.com/strainerselector.

Options

- Basket mesh from 10 to 100
- Magnetic inserts
- Differential pressure indicators



SIZES 3/4", 1", 1 1/4", 1 1/2", 2", 3", 4", 6", 8"



MATERIALS Cast Iron, Ductile Iron, Aluminum, Stainless Steel



PORTS Flanged, Grooved, Tapped (NPT or BSP)

VIKING PUMP
A Unit of IDEX Corporation

LID-EASE® STRAINERS

PERFORMANCE SPECIFICATIONS

	Size	Standard Port		Nominal Capacity At Maximum Speed		Maximum Speed		Maximum Pressure	
		Type*	Inches	GPM	M ³ /Hr	PSI	BAR	PSI	BAR
ALUM.	F-1020	G, T	2	100	23	200	14	150	10
	F-1030	F, G, T	3	200	45	125	8.5	125	8.5
	F-1040	F, G	4	400	91				
CAST IRON	F-1007	T	3/4	20	5	200	14	150	10
	F-1010	T	1	30	7				
	F-1013	T	1-1/4	40	9				
	F-1015	T	1-1/2	50	11				
	F-1020	F, T	2	100	23	125	8.5	125	8.5
	F-1030	F, T	3	200	45				
	F-1040	F	4	400	91				
	F-1060	F	6	800	182				
	F-1080	F	8	1,500	340				
DUCTILE	F-1020	F	2	100	23	200	14	150	10
	F-1030	F	3	200	45	125	8.5	125	8.5
	F-1040	F	4	400	91				
	F-1060	F	6	800	182				
STAINLESS STEEL	F-1007	T	3/4	20	5	200	14	150	10
	F-1010	T	1	30	7				
	F-1013	T	1-1/4	40	9				
	F-1015	T	1-1/2	50	11				
	F-1020	F, G, T	2	100	23	125	8.5	125	8.5
	F-1030	F, G	3	200	45				
	F-1040	F, G	4	400	91				
F-1060	F	6	800	182	125	8.5	75	5	

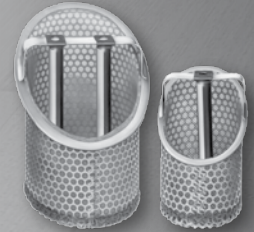
* Port Type Options: F = Flanged, G = Grooved, T = Tapped (NPT or BSP)

MESH SPECIFICATIONS

MESH	NO MESH (Perforated Basket Only)	10	20	40	60	80	100
OPENING (INCHES)	.156 (Sizes " - 1") .188 (Sizes 2" - 8")	.075	.034	.015	.009	.007	.0055
OPENING (MICRONS)	3962 (Sizes " - 1") 4775 (Sizes 2" - 8")	1,910	860	380	230	190	140

VIKING QUALITY CONSTRUCTION

- High-quality, easy-to-clean simplex strainers.
- Designed for chemical, petrochemical and most general fluid-flow applications.
- Tapped, flanged or grooved porting and are available for 3/4, 1, 1 1/4, 1 1/2, 2, 3, 4, 6 and 8 inch piping.
- SS basket and screen are available in 10, 20, 40, 60, 80 or 100 mesh.
- Nominal capacities range from 20 to 1,500 GPM.
- Pressures up to 200 PSI.
- Strainer bodies and lids are available in cast iron, ductile iron, aluminum or stainless steel.



Baskets shown with optional magnetic inserts to trap fine ferrous particles.

LOW PRESSURE DROP

Viking Lid-Ease Strainers are designed for minimal pressure drop through the unit. Pressure drop is minimized by the inclined position of the strainer basket adjacent to the porting. This provides smooth flow patterns not found in conventional basket type strainers.

Go to www.vikingpump.com for a strainer selection program that provides pressure drop for your specific viscosity.

EASY TO CLEAN

No special tools are needed for lid removal. A simple lid rotation disengages the breech-lock lid to permit easy removal of the basket. The basket is removed from the top of the strainer to eliminate foreign matter from dropping back into the line when the strainer is cleaned. The strainers are equipped with a drain plug for complete draining, if required.

Their light-weight and small overall dimensions make it possible to install Viking Lid-Ease Line Strainers in systems that cannot accommodate larger strainers of equal porting size.



VIKING PUMP

VIKING PUMP, INC.
A Unit of IDEX Corporation
406 State Street
Cedar Falls, Iowa 50613 U.S.A.
Telephone: (319) 266-1741
Fax: (319) 273-8157
www.vikingpump.com

Contact Your Distributor Today

Distributed By:

United States
www.vikingpump.com
Cedar Falls, Iowa
Phone: (319) 266-1741

Europe
www.vikingpump.com
Shannon, Ireland
Phone: +353 (61) 471933

Canada
www.vikingpumpcanada.com
Windsor, Ontario
Phone: (519) 256-5438

Asia-Pacific
www.idexfmt-asia.com
Singapore
Phone: +65-6684-7305

China - Shanghai
Phone: +86-21-5241-5599

China - Beijing
Phone: +86-10-6566-9090

China - Guangzhou
Phone: +86-20-3886-6156

India - Mumbai
Phone: +91-22-66780049/53

China - Chengdu
Phone: +86-28-86767458

China - Suzhou
Phone: +86-512-62833000

Korea - Seoul
Phone: +82-19-9134-1110

Australia & New Zealand
Phone: +61 0 4577 4534

Latin America
www.vikingpump.com

Mexico D.F., C.P.
Phone: +52 (55) 5255-1357

Brazil - Sao Paulo
Phone: +55 (19) 3871-3500

Middle East
www.idexfmt-asia.com

Dubai, UAE
Phone: +973-4-299-1095/1097

